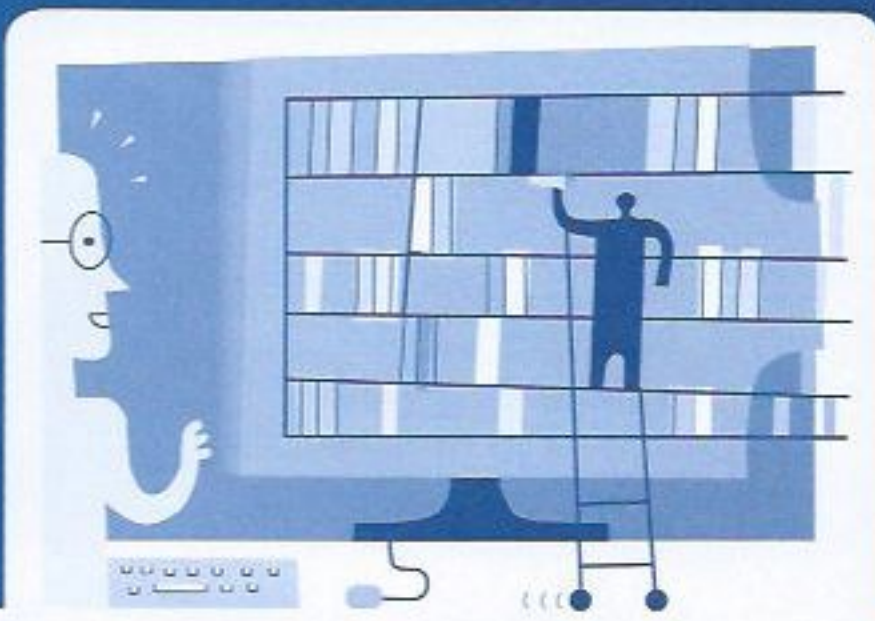


The Hoboken Public Library is a treasure...



Here's how you can help make it even more valuable to our community now and into the future!

To better serve you, the Hoboken Public Library is aiming high and

- Undertaking major renovation work in the near future. With an historic 117-year-old building, it won't happen overnight
- Phase 1 will see the renovation of the lower level adding much needed meeting rooms, an area for **Maker Space**, and a second-hand **book store** sponsored by the Friends of the Library. Expected start date: Summer 2014
- **Community Space** is a critical element in the long range plans of today's library. It's worth the wait
- Partial funding provided by a grant from the New Jersey Historic Trust

Together we can keep the library moving forward into the future

Please take this opportunity to be part of the library's renewal, thereby guaranteeing continued excellence in current service and a jump into the future.

Your tax-deductible gift counts. It makes a difference here where we live and keeps the library growing with the times.

Financial support from the residents and businesses enable the library Foundation to provide enhancements which offer – renewed physical space – new technology – lifelong learning – cross-generational community interaction

To donate, mail in the enclosed form or go to www.hobokenlibrary.org

This spring the Foundation will be hosting **Great Expectations**, its first gala event. Donors of \$250 and above to the Annual Appeal will receive a complimentary ticket to the evening's festivities.

Thank you

Board of Directors of the Hoboken Public Library Foundation

JoAnn Serrano, *President*; Bill Coughlin, *Secretary*; Brenda Griffin, *Treasurer*
Hany Amin, Ilise Benin, Anna Mae Cashin, Marika Maria Lyons, Esther Milled, Brigid Palmer, Lina Podles, Forde Prigot, Anthony Soares, Lorraine Cademartori

Founding Directors

Ilise Benin, Forde Prigot, Anna Roberts, JoAnn Serrano



We are happy to make a gift to the Hoboken Public Library Foundation and want it directed to:

- | | |
|---|--|
| <input type="checkbox"/> Capital projects—A Renovated Library | <input type="checkbox"/> Collections |
| <input type="checkbox"/> Maker Space: Cross-generational technology | <input type="checkbox"/> Endowment |
| <input type="checkbox"/> Children's and Teens' Centers | <input type="checkbox"/> Greatest Need |

Gifts of \$2,500 and above will be permanently recognized in the library.
Should you wish to make a multi-year payment, please contact the foundation director at 201-280-8959.

Name _____